



# Quality Management System

## QMS / TQM-MERGER | **WORLD-CLASS COLLABORATION**

Confluence is probably the best product in the world when it comes to efficient collaboration.

To make your QMS / TQM available quickly and easily, it is worth considering the Con-QMS product for your implementation. Thanks to Con-QMS, your organization is able to create process descriptions quickly and easily. In addition, the process implementation leaves nothing to be desired.

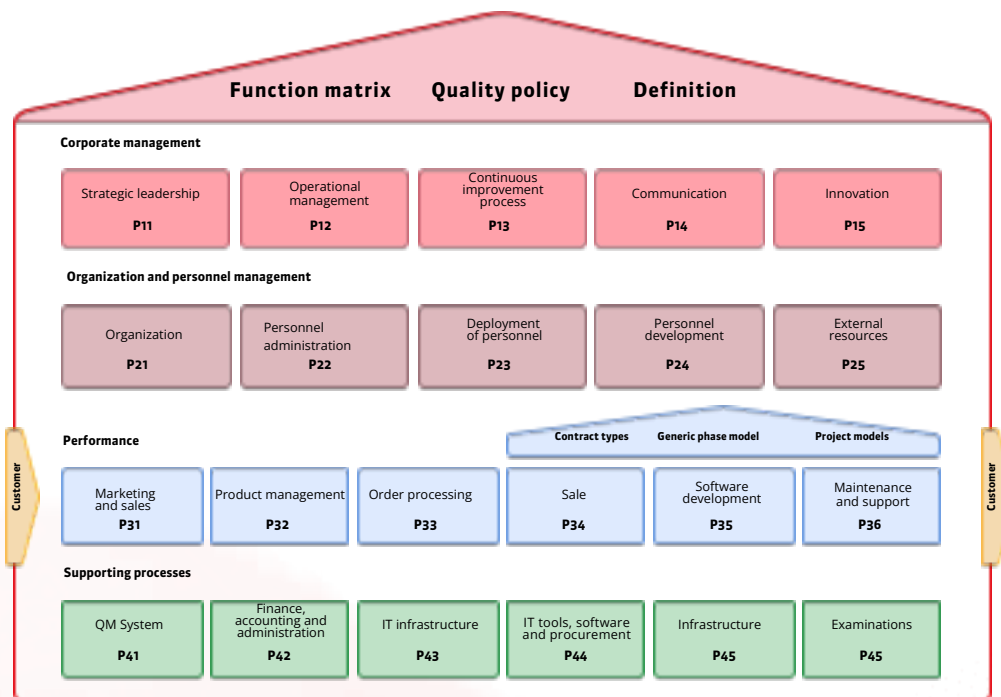
EPS has customers with over 700 process templates (created by around 100 different authors), which are used by over 10,000 users worldwide every day. That means 5,000 read and 1,000 write accesses and documents of several hundred pages.

From an EPS perspective, these impressive values prove how efficient, easy to handle and fast your QMS/TQM as well as your ISO 9001 and ISO 27001 can be implemented.

***Start a new era together with EPS today!***

## PROCESS LANDSCAPE | **SURFING THE INTERNET**

With the help of the process landscape or the process house, it is easy for your process specialists and users to get started. Thanks to the browser-supported application with graphical enhancements, operation is as easy as surfing the Internet. This turns your QMS / TQM into an internal engine and you will be amazed at how your employees want to make their contribution.



***Do you have any questions?***

We would be happy to arrange an appointment with one of our reference customers.

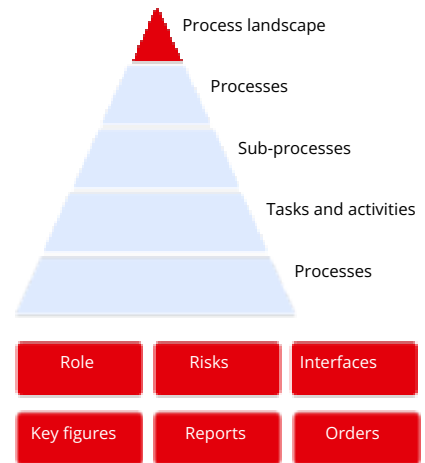


## QMS NAVIGATION | **TWO CLICKS TO YOUR DESTINATION**

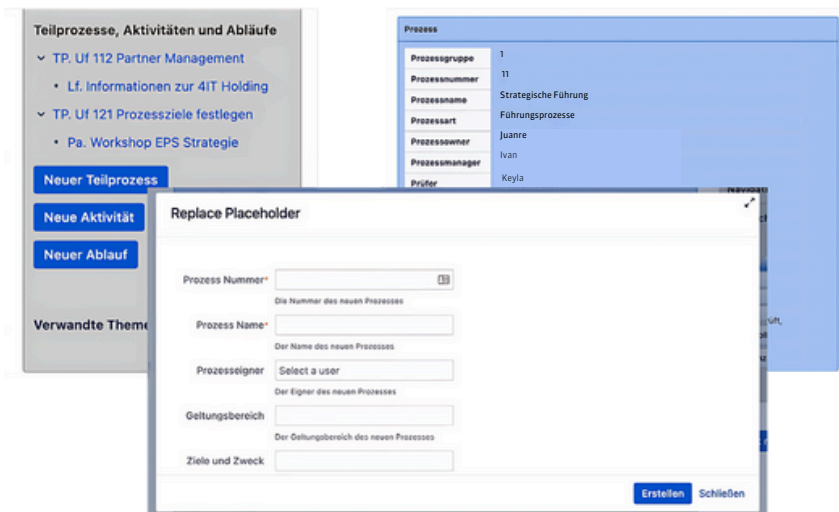
Employee changes in the processes can also be carried out efficiently - the system provides you with optimum support.

Thanks to Con-QMS and the Page Tree Creator, you can guide your employees. The digital footpaths come in the form of buttons, forms, templates, step-by-step creation of pages, etc. The simplicity lies both in the implementation and customizability as well as in the application of the digital business processes. Your users always follow the same pattern.

### Navigation Overview



## PRE-FILING AND FILING MANAGEMENT | **STEERING WITHOUT REALIZING IT**



- Start task > press button > fill in the known fields in the form
- Confluence page tree is created and other employees are notified
- Start sub-task > Press button > Fill in the known fields in the form
- Start approval process

The sophisticated navigation options of Con-QMS help your users to find the information they need in less time and support them in correctly integrating extensions into the existing structure. This keeps your QMS lively and up-to-date at all times. At EPS, for example, opportunity management has been seamlessly integrated.

COMALA WORKFLOW OR EASY DOCUMENT SIGNER | **VERSIONING, TRACEABILITY, APPROVAL, TRAINING CERTIFICATES, ETC.**

The specialists at EPS have the answers to all your questions about QMS and TQM.

In addition to Jira, Atlassian offers more than 1000 apps for Confluence via the Marketplace. So your individual requirements can be realized with the help of these extensions together with the EPS product Con-QMS.

The references listed below provide an insight into our wealth of experience. Enter the collaborative, digital age today and choose your favourite channel. We look forward to hearing from you.



#### QUALITY MANAGEMENT | **RELIABLE QUALITY**

Optics and efficient quality management simply belong together.



#### PROJECT MANAGEMENT AND DOCUMENTATION PROCESSING | **CONFLUENCE / JIRA WITH GITLAB**

The Bühler Group uses Confluence for software development, product management, as a wiki solution and for creating documentation and manuals. They use Jira to organize their project management, realize their software projects and actively use it in the documentation process.



**[www.eps.ch](http://www.eps.ch)**

EPS Software Engineering AG

Obere Bahnhofstrasse 19

9500 Wil SG

T +41 71 914 40 50 - [info@eps.ch](mailto:info@eps.ch)